

LEGEND

THE LIGHT FITTING SUPPLIER CONTACT DETAILS MAY BE AVAILABLE ON THE EDG WEBSITE VIA THE FOLLOWING LINK www.edg.net.au/Links/Lighting.htm

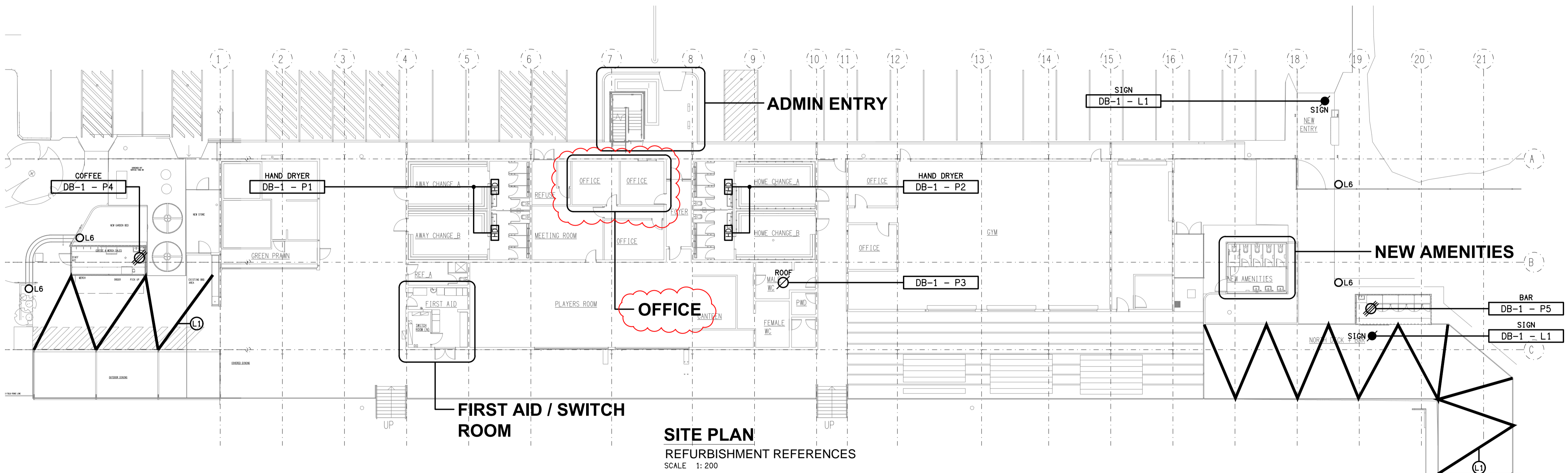
TYPE	LAMPS	DESCRIPTION	COLOUR / ACCESSORY	CATALOGUE No
L1	1W LED AT 500 CENTRES	24V DC IP65 FESTOON LIGHTING TO BE FIXED TO A 316 STAINLESS STEEL WIRE SUPPORT SYSTEM. LOCATE THE DRIVER IN A CONCEALED ACCESSIBLE POSITION NOTED ON THE AS CONSTRUCTED DOCUMENTS. CONNECT TO THE STRUCTURE / POLES PROVIDED AS PART OF THE BUILDING WORKS AS PER THE ARCHITECTURAL DOCUMENTATION. CONTROL EACH GROUP OF L1 LIGHTS VIA A MANUAL SWITCH LOCATED IN THE ADJACENT CONTAINER. CIRCUIT EACH GROUP OF L1 FITTINGS FROM THE ADJACENT CONTAINERS LIGHTING CIRCUIT.	BLACK CABLE AND FIXINGS 316 STAINLESS STEEL SUPPORT AND FIXINGS	GLOW WORM LIGHTING 1M (2 GLOBE/M) COMMERCIAL GRADE LED FESTOON LIGHTING
L2	36W LED 4000K	SURFACE MOUNTED IP66 1200 LONG BATTEN C/W INTEGRAL DRIVER, OCCUPANCY SENSOR AND AN AS2293 NON MAINTAINED EMERGENCY PACK	LIGHT GREY	GAMMA STORM 1558-CCT-36 + SENSOR
L3	36W LED 4000K	SURFACE MOUNTED IP66 1200 LONG BATTEN C/W INTEGRAL DRIVER AND OCCUPANCY SENSOR	LIGHT GREY	GAMMA STORM 1558-CCT-36 + SENSOR
L4	13W 4000K LED	SURFACE MOUNTED 93 DEG BEAM CAN DOWNLIGHT C/W INTEGRAL DRIVER	WHITE TRIM	GAMMA ILLUMINATION TONDO 1325-4K-13W
L5		RELOCATE THE EXISTING CEILING MOUNTED EXAMINATION LIGHT AND ASSOCIATED SWITCH. CONFIRM THE FINAL POSITION ON SITE WITH THE OPERATOR.		
L6	28W 3000K LED	LIGHTING BOLLARD C/W INTEGRAL DRIVER AND A RAGBOLT FOOTING. CIRCUIT AND SWITCH THE L6 FITTINGS WITH THE ADJACENT L1 FITTINGS.	BLACK	GAMMA ILLUMINATION BOLO 1462-3K-28W
L7		RELOCATE THE EXISTING OFFICE LIGHT AS INDICATED. CIRCUIT AND SWITCH THE L7 FITTING WITH THE ADJACENT L10 FITTING.		
L8		EXISTING RECESSED DOWNLIGHT TO REMAIN AS IS.		
L9		PROVIDE NEW RECESSED DOWNLIGHTS TO MATCH THE EXISTING L8 FITTING. CIRCUIT AND SWITCH THE L9 FITTINGS WITH THE L8 FITTING.		
L10		EXISTING OFFICE LIGHT TO REMAIN AS IS.		
	ONE-WAY LIGHT SWITCH	ONE-WAY LIGHT SWITCH C/W CIRCUIT IDENTIFICATION ON THE FACEPLATE BEHIND THE SURROUND MOUNTED AT 1000mm AFLL UNLESS NOTED OTHERWISE.	WHITE	CLIPSAL C2000 SERIES 30USM
	TWO-WAY LIGHT SWITCH	TWO-WAY LIGHT SWITCH C/W CIRCUIT IDENTIFICATION ON THE FACEPLATE BEHIND THE SURROUND MOUNTED AT 1000mm AFLL UNLESS NOTED OTHERWISE.	WHITE	CLIPSAL C2000 SERIES 30USM
	PROXIMITY DETECTOR SWITCH (PD)	ADJUSTABLE FLUSH RECESSED 360 DEGREE PIR PRESENCE DETECTOR TO OPERATE THE ASSOCIATED LIGHTS FOR A PRE-SET AMOUNT OF TIME. ADJUST THE TIME AND SENSITIVITY ON SITE AS DIRECTED BY THE ENGINEER. SUBMIT DETAILS OF THE MOVEMENT DETECTOR SWITCH FOR APPROVAL PRIOR TO ORDERING	WHITE	CLIPSAL
	COMMUNICATIONS OUTLET	RJ45 CAT-6 COMMUNICATIONS OUTLET, CABLED BACK TO A PATCH PANEL IN THE EXISTING COMMUNICATIONS RACK VIA 4-PAIR CAT-6 UTP CABLE. IT IS ACCEPTABLE TO UTILISE THE EXISTING OFFICE COMMUNICATIONS OUTLETS / CABLE IF THEY ARE IN APPROPRIATE CONDITION AND CAN BE RELOCATED WITHOUT A JOIN.	WHITE	CLIPSAL C2000 SERIES
	SINGLE POWER OUTLET	SINGLE POWER OUTLET. CONFIRM THE POSITION ON SITE WITH THE OPERATOR. RATING 10A U.N.O.	WHITE	CLIPSAL C2000 SERIES
	DOUBLE POWER OUTLET	DOUBLE POWER OUTLET. CONFIRM THE POSITION ON SITE WITH THE OPERATOR. RATING 10A U.N.O.	WHITE	CLIPSAL C2000 SERIES
	HAND DRYER CONNECTION (HD)	DIRECT CONNECT THE HAND DRYER SUPPLIED BY THE BUILDER VIA A CONCEALED CABLE.		

LEGEND

THE LIGHT FITTING SUPPLIER CONTACT DETAILS MAY BE AVAILABLE ON THE EDG WEBSITE VIA THE FOLLOWING LINK www.edg.net.au/Links/Lighting.htm

TYPE	LAMPS	DESCRIPTION	COLOUR / ACCESSORY	CATALOGUE No
SIGN CONNECTION		COORDINATE THE LOCATION AND CONNECTION WITH THE SIGN CONTRACTOR ENSURING THE GPO / ISOLATORS ARE PROVIDED WITH APPROPRIATE WEATHER PROTECTION AND ARE CONCEALED FROM VIEW.		
SINGLE-PHASE ISOLATOR		SINGLE-PHASE WEATHERPROOF ISOLATOR CONNECTED TO THE ROOF MOUNTED EXHAUST FAN.		
THREE-PHASE ISOLATOR		THREE-PHASE CONNECTION TO THE CONTAINER DISTRIBUTION BOARD COORDINATE THE LOCATION AND CABLE ACCESS WITH EH CONTAINER SUPPLIER.		
DB-1		RELOCATE THE EXISTING DISTRIBUTION BOARD DB-1 AS NOMINATED. PROVIDE NEW SWITCHGEAR AND CONTROLS WITHIN DB-1 OF THE SAME BRAND AND TYPE AS THE EXISTING AS PER THE CIRCUIT DESCRIPTIONS BELOW. UPDATE THE SCHEDULE AT PRACTICAL COMPLETION. PROVIDE DB-1 WITH AN AS2293 TEST FACILITY. UPGRADE DB-1 AS NECESSARY TO ACCOMMODATE THE ADDITIONAL CIRCUITS.		
CIRCUIT DB-1 - P1		PROVIDE A NEW CIRCUIT DB-1 - P1 AS A SINGLE PHASE 20 AMP RCBO PROTECTED 2.5MM CIRCUIT SUPPLYING THE HAND DRYERS.		
CIRCUIT DB-1 - P2		PROVIDE A NEW CIRCUIT DB-1 - P2 AS A SINGLE PHASE 20 AMP RCBO PROTECTED 2.5MM CIRCUIT SUPPLYING THE HAND DRYERS.		
CIRCUIT DB-1 - P3		PROVIDE A NEW CIRCUIT DB-1 - P3 AS A SINGLE PHASE 20 AMP RCBO PROTECTED 2.5MM CIRCUIT CONTROLLED VIA A 24 / 7 TIME CLOCK TO SUPPLY THE ROOF MOUNTED EXHAUST FAN.		
CIRCUIT DB-1 - P4		PROVIDE A NEW CIRCUIT DB-1 - P4 AS A THREE PHASE 40 AMP 4C 10MM CIRCUIT RUN UNDERGROUND IN CONDUIT BETWEEN THE BUILDINGS SUPPLYING THE COFFEE CONTAINER DISTRIBUTION BOARD.		
CIRCUIT DB-1 - P5		PROVIDE A NEW CIRCUIT DB-1 - P5 AS A THREE PHASE 40 AMP 4C 10MM CIRCUIT RUN UNDERGROUND IN CONDUIT BETWEEN THE BUILDINGS SUPPLYING THE BAR CONTAINER DISTRIBUTION BOARD.		
CIRCUIT DB-1 - L1		PROVIDE A NEW CIRCUIT DB-1 - L1 AS A SINGLE PHASE 20 AMP RCBO PROTECTED 2.5MM CIRCUIT RUN UNDERGROUND IN CONDUIT BETWEEN THE BUILDINGS SUPPLYING THE ILLUMINATED SIGNAGE. CONTROL THE CIRCUIT SUCH THAT IT AUTOMATICALLY SWITCHES ON VIA A PE CELL 30 MINUTES PRIOR TO DUSK AND OFF VIA A TIME CLOCK. CONFIRM THE TIME WITH THE OPERATOR.		
CIRCUIT DB-1 - L2		PROVIDE A NEW CIRCUIT DB-1 - L2 AS A SINGLE PHASE 20 AMP RCBO PROTECTED 2.5MM LIGHTING CIRCUIT. IT IS ACCEPTABLE TO UTILISE AN EXISTING LIGHTING CIRCUIT IF IT HAS SUFFICIENT CAPACITY.		

- DB-1 - P1
- DB-1 - P2
- DB-1 - P3
- DB-1 - P4
- DB-1 - P5
- DB-1 - L1
- DB-1 - L2



SITE PLAN
REFURBISHMENT REFERENCES
SCALE 1:200

ELECTRICAL DESIGN GROUP BRISBANE PTY LTD
ACN 092 710 793
TRADING AS:
ELECTRICAL DESIGN GROUP

THE COPYRIGHT OF THIS DRAWING REMAINS THE PROPERTY OF THE ELECTRICAL DESIGN GROUP.
USE FIGURED DIMENSIONS IN PREFERENCE TO SCALE.
ALL DIMENSIONS TO BE VERIFIED ONSITE.

ELECTRICAL DESIGN GROUP
ELECTRICAL BUILDING SERVICES CONSULTANTS
BRISBANE GOLD COAST
P.O. Box 15, Sherwood Q.4075
Phone: (07) 3278 4375
Email: brisbane@edg.net.au
Web: www.edg.net.au

PROJECT:
SUNNYBANK RUGBY CLUB
162 GRANADILLA STREET, SUNNYBANK

H	CONSTRUCTION	13/02/2025
REV.	DESCRIPTION:	DATE:
DRAWING: ELECTRICAL SERVICES LEGEND & SITE PLAN		
SCALE: 1:200	PROJECT NO: C3377a	DRAWING NO: E01
AT A1	REVISION: H	